



Training and Research in Unconventional Computation in Europe

WP5 Management

Lead - Martyn Amos, MMU

Project manager - Daphne Lai, MMU



FP7 – ICT: Coordinating Communities, Identifying new research topics for the FET Proactive Initiatives and Fostering Networking of National and Regional Programmes
Project no. 318235



WP5 - Objectives, Year 1

- To manage and control the project resources (personnel, finance, equipment, etc.)
- To monitor and control the financial and administrative procedures of the project.
- To direct and coordinate communication between the consortium and the European Commission.
- To monitor consistency between the project results and the strategic objectives of the partners.
- To ensure quality assurance procedures are established and observed.



WP5: Progress and Achievements

- Establishment of management quality/assurance procedures (project manual): **T5.1, D5.1**
- Construction of project website and intranet: **T5.2, D5.2**
- Project leadership (**T5.3**), administration/monitoring (**T5.4**), financial coordination (**T5.5**), quality assurance (**T5.6**)
- All deliverables submitted as planned



Quality assurance

- Project Handbook
- Internal reporting documents (WP templates)
- Collaborative research application pack
 - Application form
 - FAQs
 - Expenditure request workflow
 - Evaluation form
- Links to FP7 documentation





TRUCE

Training and Research in Unconventional Computation in Europe

HOME ABOUT US RESEARCH UCOMP ROADMAP EVENTS & ACTIVITIES RESOURCE REPOSITORY GALLERY MORE...

We are an umbrella project to help nurture, foster development and support research activities in the field of Unconventional Computation (UCOMP).

[Read more](#)

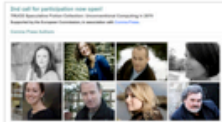
Search



TRUCE | What's New

- News | [TRUCE Speculative Fiction Collection - deadline 12 December 2013](#)
- News | [TRUCE UCOMP Roadmap Survey - deadline 06 January 2014](#)
- Gallery | [ICT 2013 in Vilnius](#)
- Past Events | [ICT 2013, presentation: FET Open/Proactive in H2020](#) (1 MB)
- Resource Repository | [A collection of audio, videos, presentation slides & publications](#)

Next TRUCE Event



Click image for more information

TRUCE Speculative Fiction Collection

2nd call for ideas now open!

Submission deadline: 12 December 2013

Notification: 12 January 2014



Click image to view leaflet

06 November 2013 - 06 January 2014

The TRUCE Roadmap Survey is now launched!

Participate here to win an iPad mini or a Nexus 7 tablet!

News Feed

Tweets Follow

FET_EU @fet_eu 20 Nov
Interested in Unconventional Computing? Take @TRUCEprojectFP7 survey to shape the future of #UCOMP research bit.ly/1cFug7K #FET_eu
Retweeted by TRUCE project FP7
Expand

TRUCE project FP7 @TRUCEprojectFP7 14 Nov
Second call for the TRUCE Speculative Fiction Collection is NOW OPEN!! Submit your ideas before 12 DECEMBER 2013: [truce-project.eu/2nd-call-truce...](#)
Expand

ICT 2013 eu @ict2013eu 13 Nov
Check out the #ICT2013eu videos here: [bit.ly/184Y1jf](#) Do you appear in any of them?
Retweeted by TRUCE project FP7
Show Summary

TRUCE project FP7 @TRUCEprojectFP7 11 Nov
Thank you @ict2013eu, @DigitalAgendaEU and @EU2013LT for the great experience at the [summit](#)
Tweet to @TRUCEprojectFP7



FP7 – ICT: Coordinating Communities, Identifying new research topics for the FET Proactive Initiatives and Fostering Networking of National and Regional Programmes
Project no. 318235



Leadership/management

- Financial contribution correctly allocated
- Full financial records and accounts available
- Payments were made to partners, all of whom have complied with obligations:

€56,201.66 to SDU on 14/2/13; €36,033.80 to YORK on 16/5/2013; €54,730.42 to UMA on 14/2/13



Project effort

Partner	WP1		WP2		WP3		WP4		WP5		Total per partner	Total Year 1
	Effort	Year 1	Effort	Year 1	Effort	Year 1	Effort	Year 1	Effort	Year 1		
MMU	1.00	0.30	11.00	2.60	4.00	0.00	0.00	0.00	23.00	4.60	39.00	7.50
YORK	4.55	0.76	1.30	0.00	0.00	0.00	0.65	0.04	0.00	0.00	6.50	0.80
UMA	0.00	0.00	0.00	0.00	6.50	0.20	0.00	0.00	0.00	0.00	6.50	0.20
SDU	2.00	0.33	0.00	0.00	0.00	0.00	4.50	0.72	0.00	0.00	6.50	1.05
Total	7.55	1.39	12.30	2.60	10.50	0.20	5.15	0.76	23.00	4.60	58.50	9.55



FP7 – ICT: Coordinating Communities, Identifying new research topics for the FET Proactive Initiatives and Fostering Networking of National and Regional Programmes
Project no. 318235



Project effort

Partner	WP1		WP2		WP3		WP4		WP5		Total per partner	Total Year 1
	Effort	Year 1	Effort	Year 1	Effort	Year 1	Effort	Year 1	Effort	Year 1		
MMU	1.00	0.30	11.00	2.60	4.00	0.00	0.00	0.00	23.00	4.60	39.00	7.50
YORK	4.55	0.76	1.30	0.00	0.00	0.00	0.65	0.04	0.00	0.00	6.50	0.80
UMA	0.00	0.00	0.00	0.00	6.50	0.20	0.00	0.00	0.00	0.00	6.50	0.20
SDU	2.00	0.33	0.00	0.00	0.00	0.00	4.50	0.72	0.00	0.00	6.50	1.05
Total	7.55	1.39	12.30	2.60	10.50	0.20	5.15	0.76	23.00	4.60	58.50	9.55

WP1: In line with expected effort

WP2: Broadly in line, will increase as exchange visits, collected volume and theme liason activities all expand

WP3: Will transfer repository effort over from WP5

WP4: N/A

WP5: Broadly in line (4.6 as opposed to expected 7.6). Some Management PMs spent on establishing repository (WP3 activity), plus Daphne Lai started after project began



Project effort

Partner	WP1		WP2		WP3		WP4		WP5		Total per partner	Total Year 1
	Effort	Year 1	Effort	Year 1	Effort	Year 1	Effort	Year 1	Effort	Year 1		
MMU	1.00	0.30	11.00	2.60	4.00	0.00	0.00	0.00	23.00	4.60	39.00	7.50
YORK	4.55	0.76	1.30	0.00	0.00	0.00	0.65	0.04	0.00	0.00	6.50	0.80
UMA	0.00	0.00	0.00	0.00	6.50	0.20	0.00	0.00	0.00	0.00	6.50	0.20
SDU	2.00	0.33	0.00	0.00	0.00	0.00	4.50	0.72	0.00	0.00	6.50	1.05
Total	7.55	1.39	12.30	2.60	10.50	0.20	5.15	0.76	23.00	4.60	58.50	9.55

WP1: In line with expected effort. Will ramp up as Roadmap development intensifies

WP2: No first year contribution expected - comes later in project, with exchanges, contributions to collected volume, etc.

WP3: N/A

WP4: Effort will come later in project, when Roadmap is in final stages and advocacy activities ramp up

WP5: N/A



Project effort

Partner	WP1		WP2		WP3		WP4		WP5		Total per partner	Total Year 1
	Effort	Year 1	Effort	Year 1	Effort	Year 1	Effort	Year 1	Effort	Year 1		
MMU	1.00	0.30	11.00	2.60	4.00	0.00	0.00	0.00	23.00	4.60	39.00	7.50
YORK	4.55	0.76	1.30	0.00	0.00	0.00	0.65	0.04	0.00	0.00	6.50	0.80
UMA	0.00	0.00	0.00	0.00	6.50	0.20	0.00	0.00	0.00	0.00	6.50	0.20
SDU	2.00	0.33	0.00	0.00	0.00	0.00	4.50	0.72	0.00	0.00	6.50	1.05
Total	7.55	1.39	12.30	2.60	10.50	0.20	5.15	0.76	23.00	4.60	58.50	9.55

WP1: N/A

WP2: N/A

WP3: See previous explanation concerning summer schools. Vast bulk of effort will come in Years 2 and 3

WP4: N/A

WP5: N/A



Project resources

Partner	WP1		WP2		WP3		WP4		WP5		Total per partner	Total Year 1
	Effort	Year 1	Effort	Year 1	Effort	Year 1	Effort	Year 1	Effort	Year 1		
MMU	1.00	0.30	11.00	2.60	4.00	0.00	0.00	0.00	23.00	4.60	39.00	7.50
YORK	4.55	0.76	1.30	0.00	0.00	0.00	0.65	0.04	0.00	0.00	6.50	0.80
UMA	0.00	0.00	0.00	0.00	6.50	0.20	0.00	0.00	0.00	0.00	6.50	0.20
SDU	2.00	0.33	0.00	0.00	0.00	0.00	4.50	0.72	0.00	0.00	6.50	1.05
Total	7.55	1.39	12.30	2.60	10.50	0.20	5.15	0.76	23.00	4.60	58.50	9.55

WP1: Broadly in line, will increase as Roadmap is drafted

WP2: N/A

WP3: N/A

WP4: Mainly strategy development. Main activities involve D4.4: Exhibition, which comes in M31

WP5: N/A



Project meetings

- Kick-off meeting, Manchester, Jan. 25, 2013
- Attendance at FET Proactive Evolving Living Technologies (EVLIT) common negotiation meeting (to present TRUCE to EVLIT projects), May 15, 2013
- TRUCE board meeting, which took place during the project workshop, held as part of the European Conference on Artificial Life, Taormina, Italy, Sep. 2, 2013
- Plus Skype meetings of the board on Sep. 26, 2013, and Oct. 15, 2013 (see D5.6 for minutes)

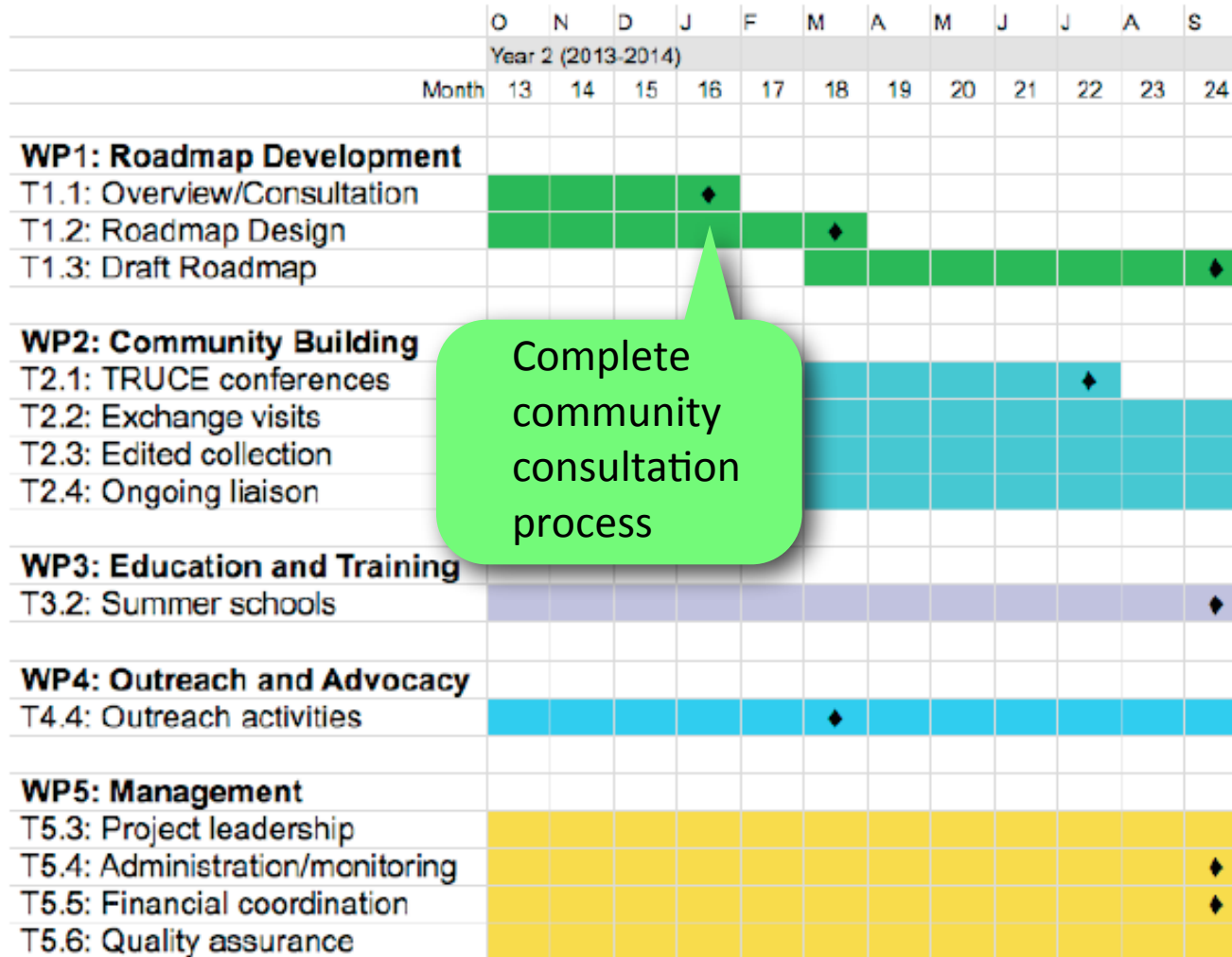


Project planning and status

	O	N	D	J	F	M	A	M	J	J	A	S
	Year 2 (2013-2014)											
Month	13	14	15	16	17	18	19	20	21	22	23	24
WP1: Roadmap Development												
T1.1: Overview/Consultation	█	█	█	◆								
T1.2: Roadmap Design	█	█	█	█	█	◆						
T1.3: Draft Roadmap						█	█	█	█	█	█	◆
WP2: Community Building												
T2.1: TRUCE conferences			█	█	█	█	█	█	█	◆		
T2.2: Exchange visits	█	█	█	█	█	█	█	█	█	█	█	█
T2.3: Edited collection	█	█	█	█	█	█	█	█	█	█	█	█
T2.4: Ongoing liaison	█	█	█	█	█	█	█	█	█	█	█	█
WP3: Education and Training												
T3.2: Summer schools												◆
WP4: Outreach and Advocacy												
T4.4: Outreach activities	█	█	█	█	█	◆	█	█	█	█	█	█
WP5: Management												
T5.3: Project leadership												
T5.4: Administration/monitoring												◆
T5.5: Financial coordination												◆
T5.6: Quality assurance												



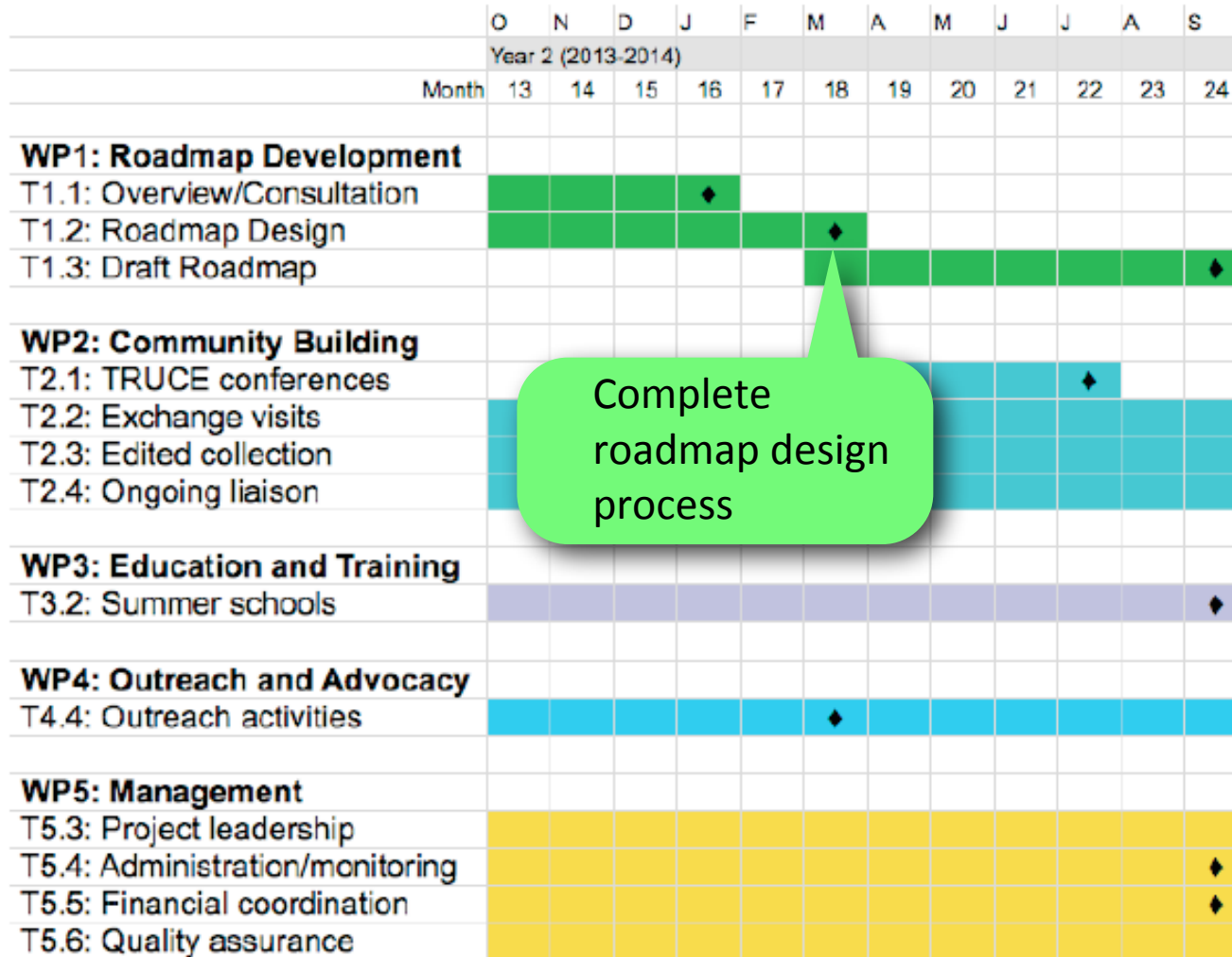
Project planning and status



Complete community consultation process



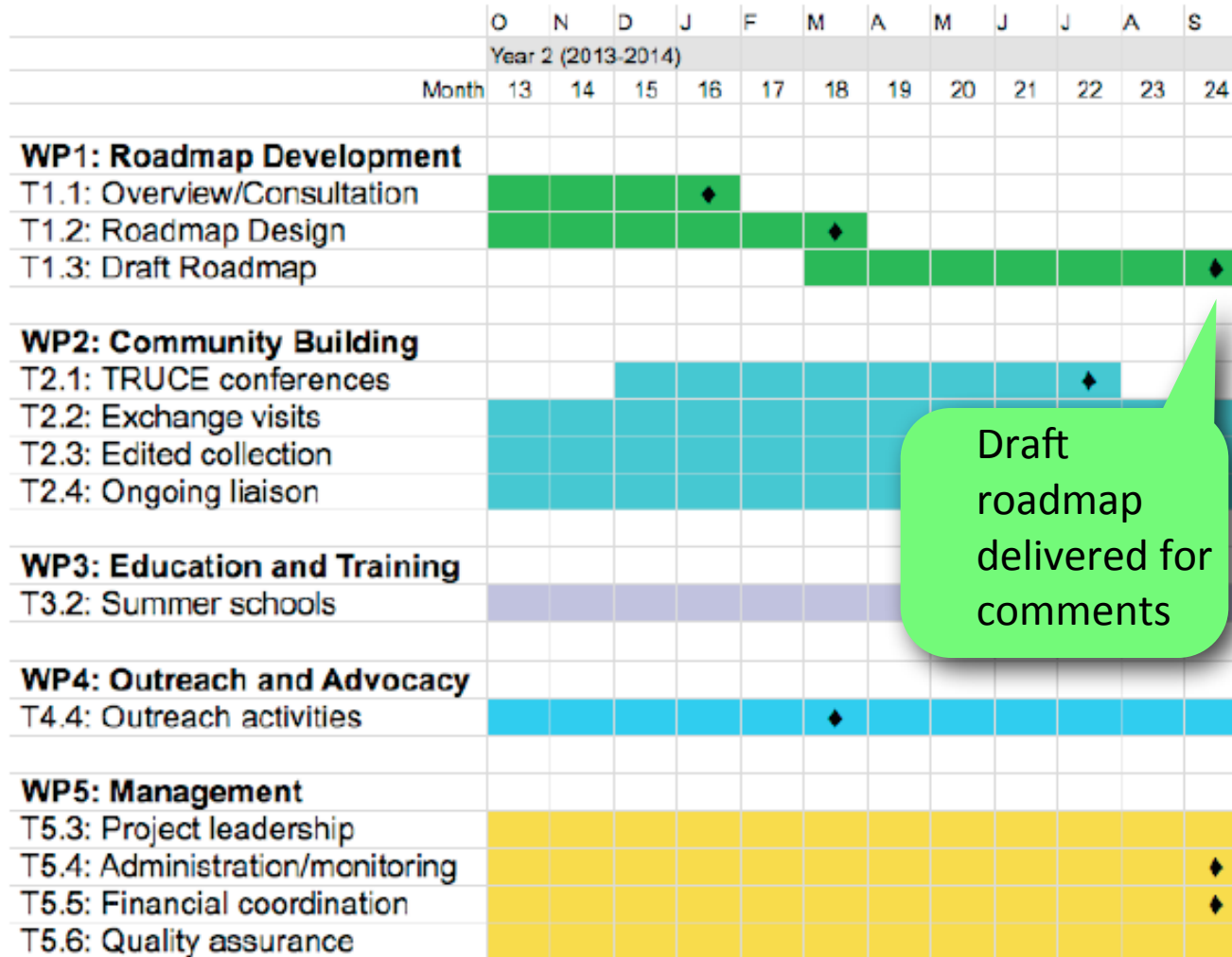
Project planning and status



Complete roadmap design process



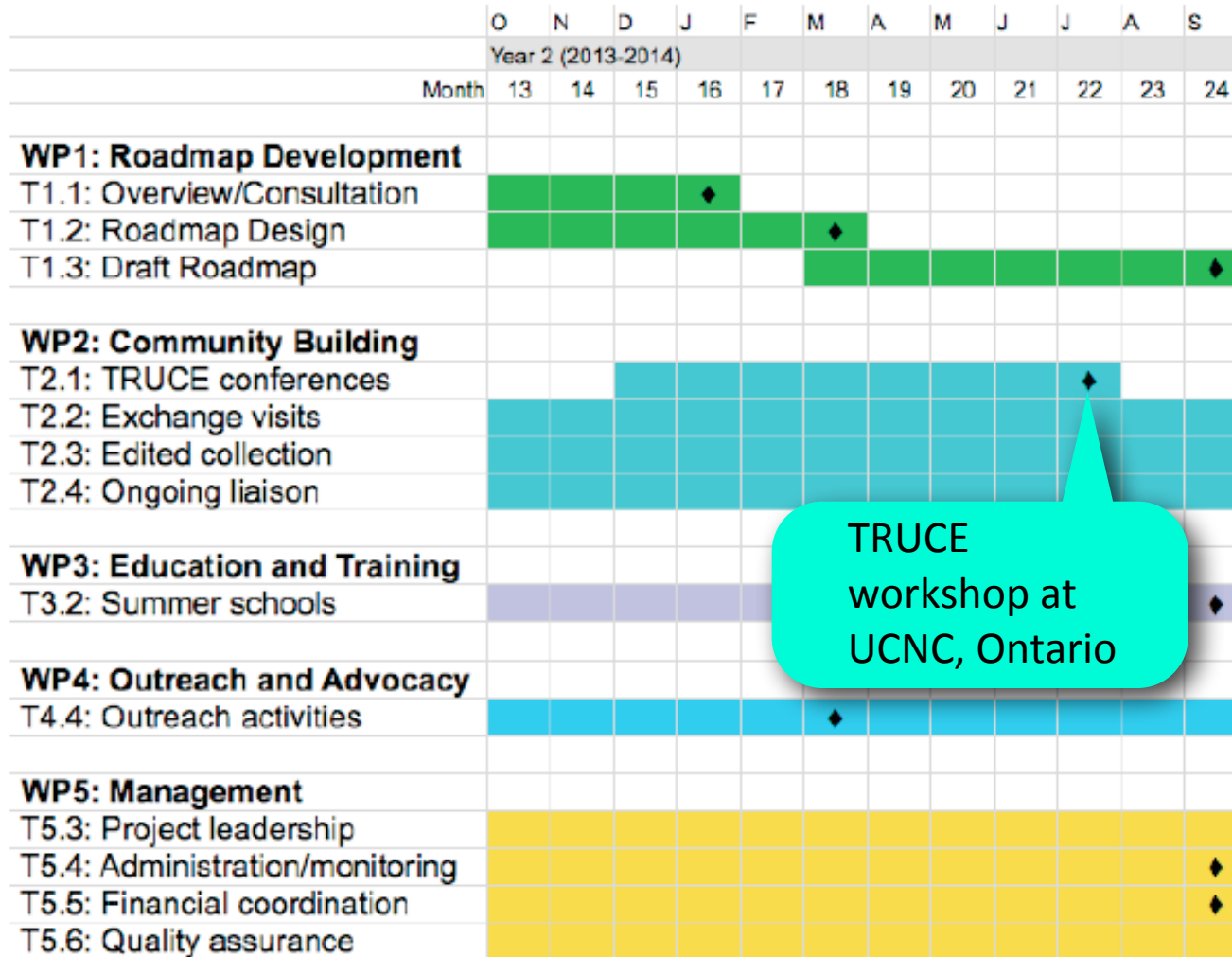
Project planning and status



Draft roadmap delivered for comments



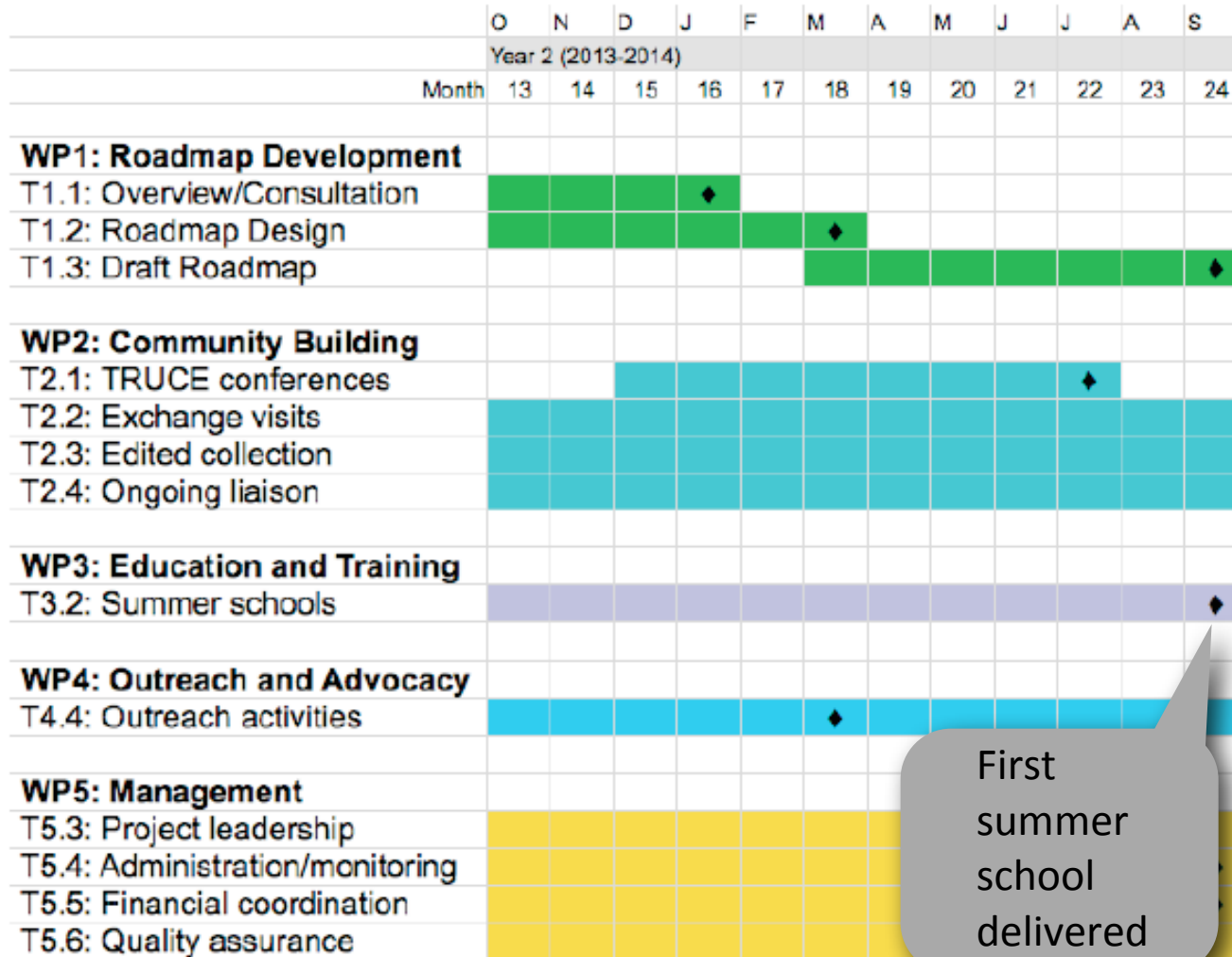
Project planning and status



TRUCE workshop at UCNC, Ontario



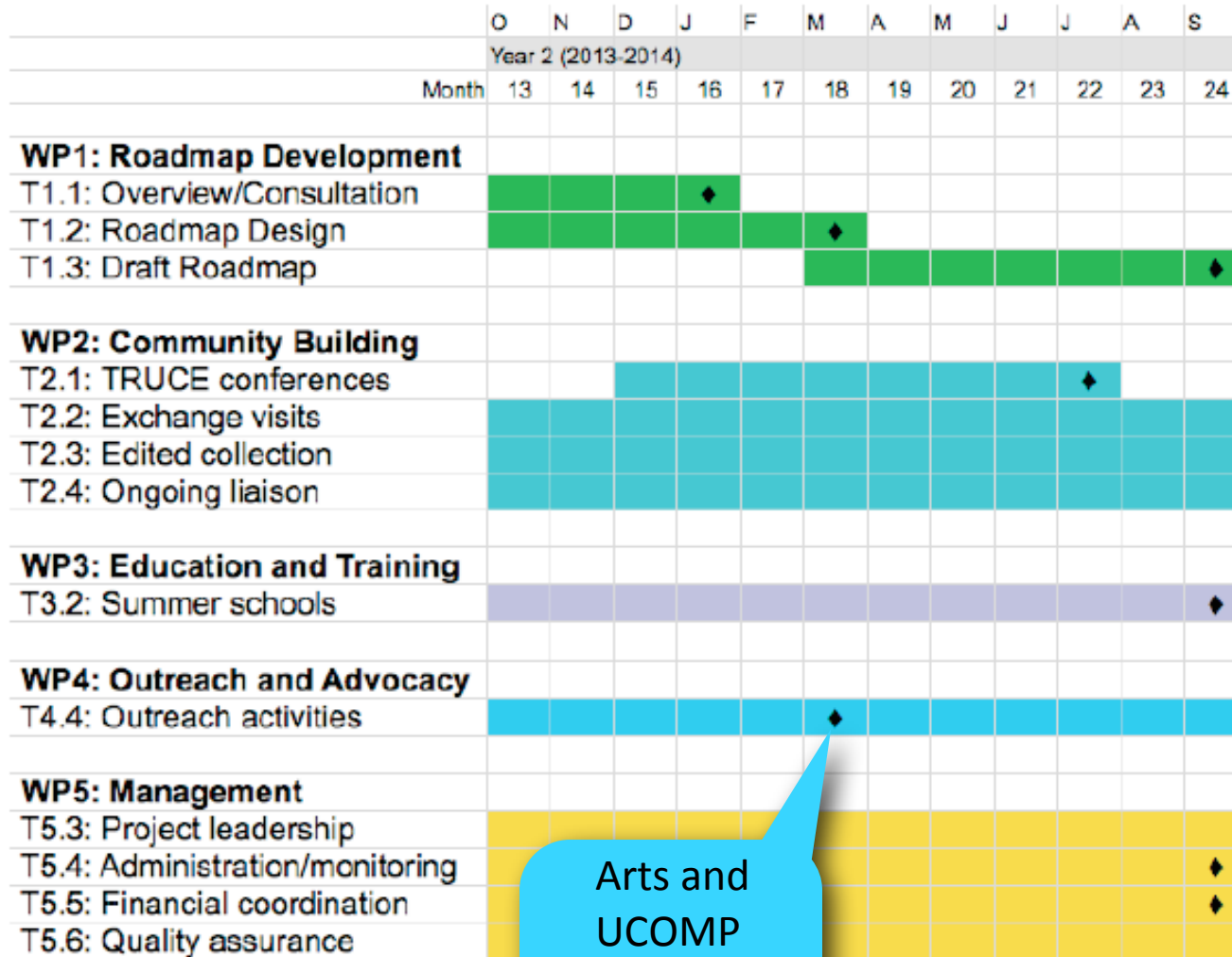
Project planning and status



First summer school delivered



Project planning and status



Arts and UCOMP workshop

